



OPPOSITES



feel the attraction of opposites
- find your balance

O P P O S I T E S

2 new designs in 14 neutral tones are here,
just for you, to let you feel the contrasts
and balance them out. Not only in your
interior, but in your life, whether
it is bubbling hot or coolly laid-back.



CONCRETE

the powerful
touch of victory

- heaving lungs
- racing pulse
- adrenalin
- total focus
- rippling muscles
- well-honed strategy
- hard as a rock,
yet more refined
- knowing your aim



- knowing why
- knowing what it takes
- never doubting
- unstoppable
- all-out achieving
- efforts being rewarded
- life is tough
- strive and survive



HELSINKI





HELSINKI

CASABLANCA





CASABLANCA

RIO



RIO

NEW YORK



NEW YORK

CHICAGO





CHICAGO

DUBAI



DUBAI

BERLIN



BERLIN

JOINT VARIABILITY

to find your balance

CONCRETE

-

the essence of the city.
Straight lines and
rough-hewn structures.

Do you prefer visible
joints for a panelled
effect or seamless
'double-cut' joints? It is
purely up to you to
decide...



S K I N

the gentle touch
of skin on skin

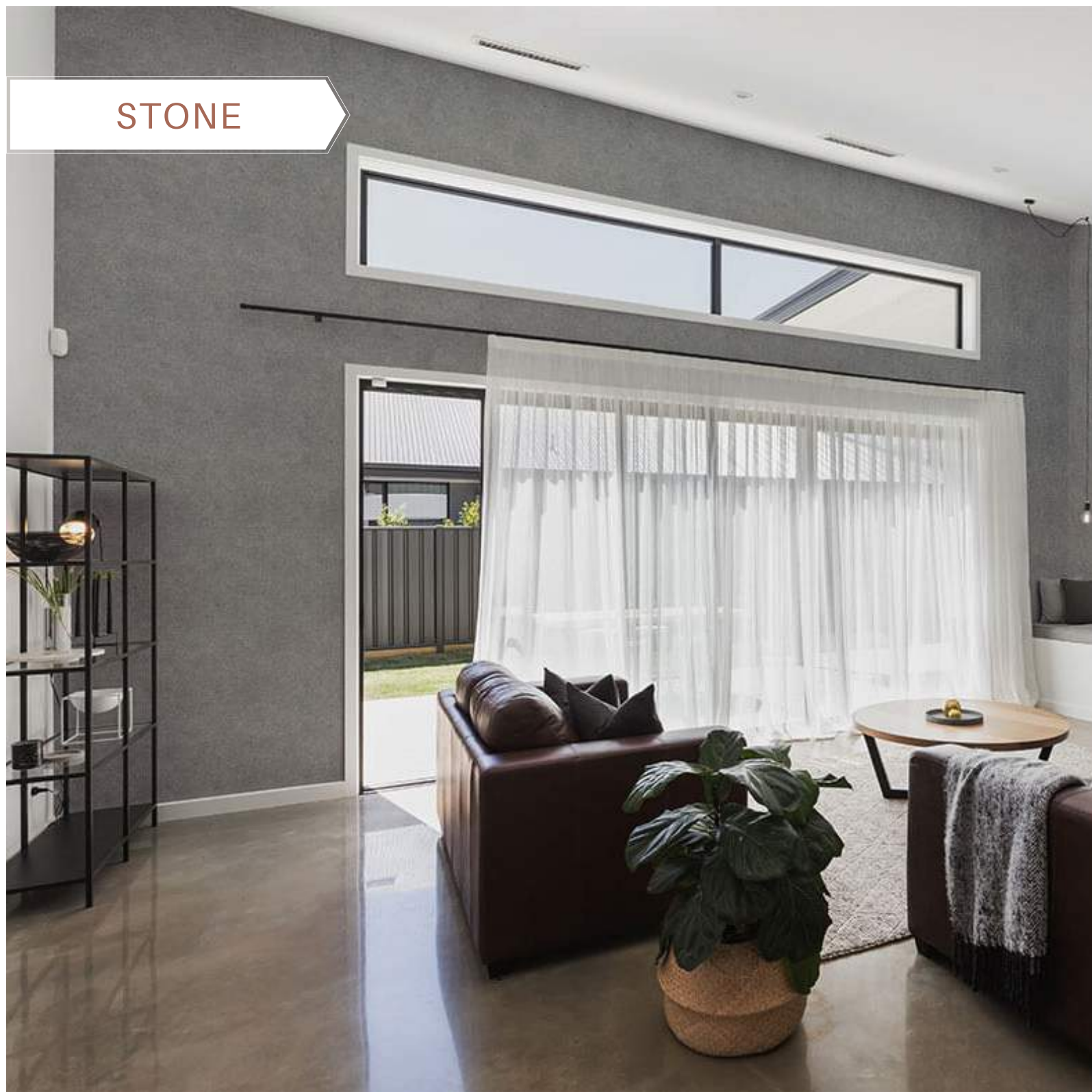


The tenderness and fervour in her eyes, approaching softly and gracefully closer ... step by step. In no hurry, time on hold, awaiting the unforgettable, sensing that frisson of butterflies, feeling that weak-knees moment to the full. That moment when serenity and devotion are at hand, when you feel that safe, reassuring embrace. The familiar intimacy of living warmth, the glint of skin touching skin, the flash of passion and firm stability, as one, softness and sensuality, unconditional.



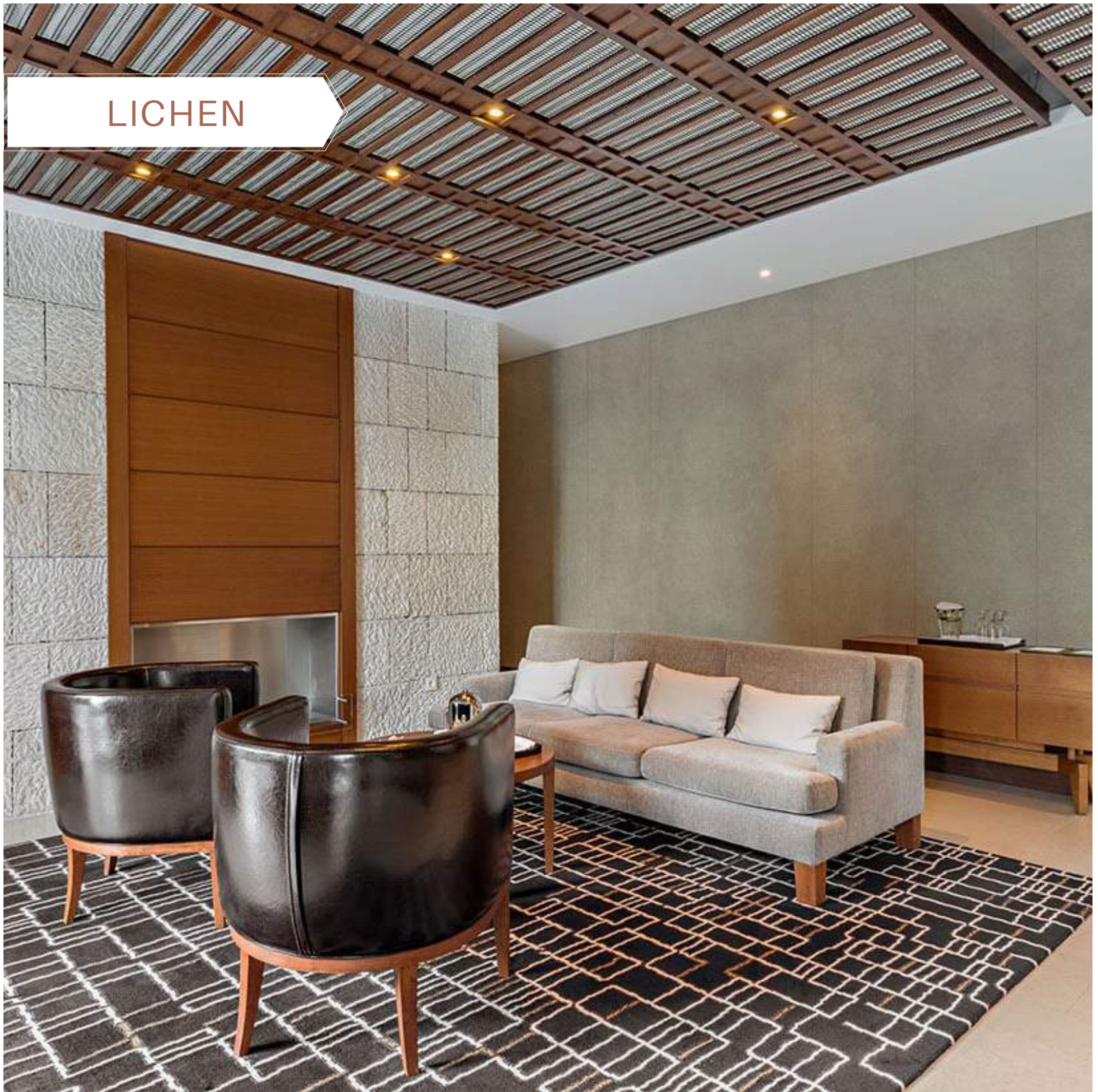


STONE



STONE

LICHEN



lichen

SAND



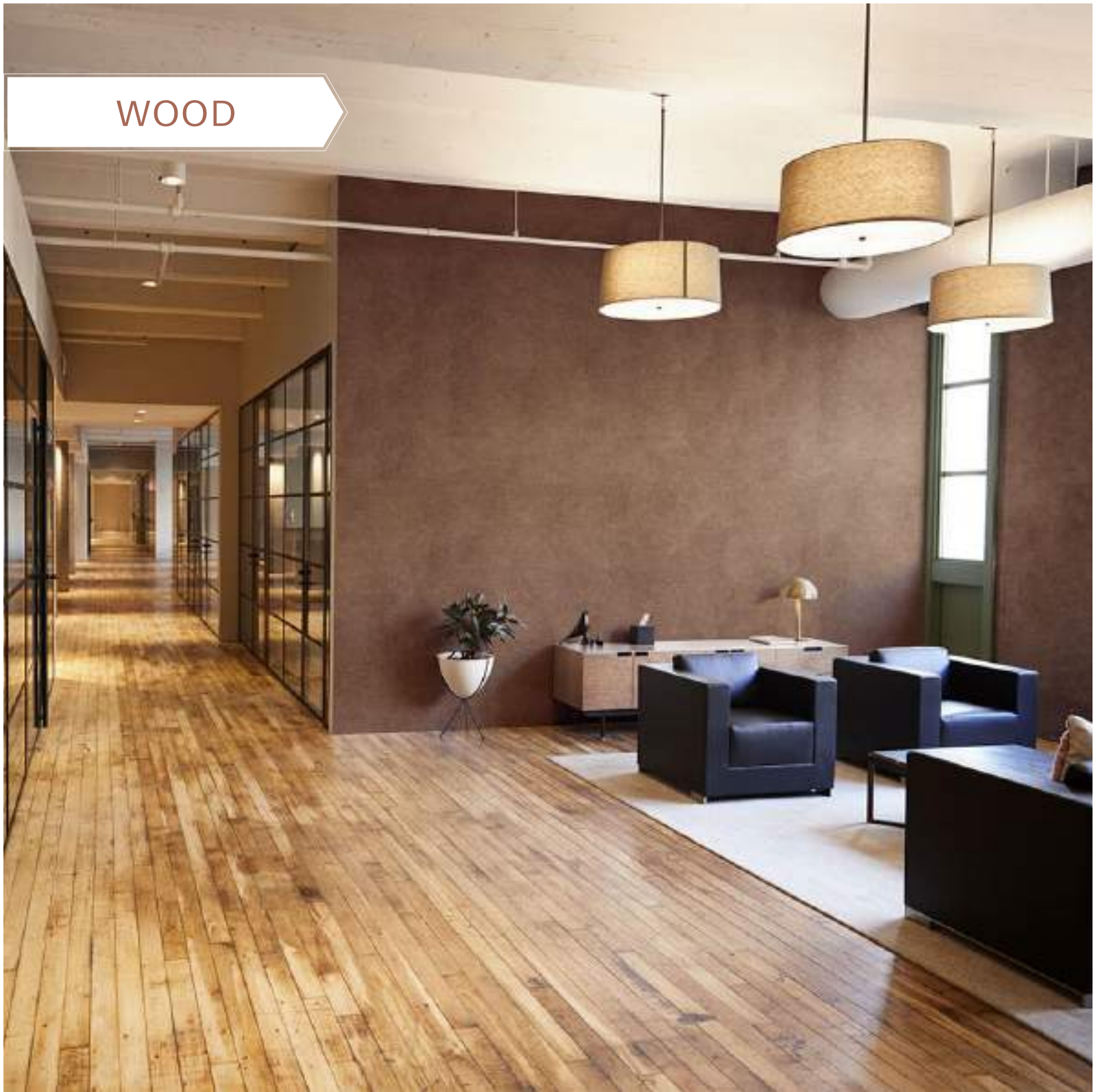
SAND

HONEY



HONEY

WOOD



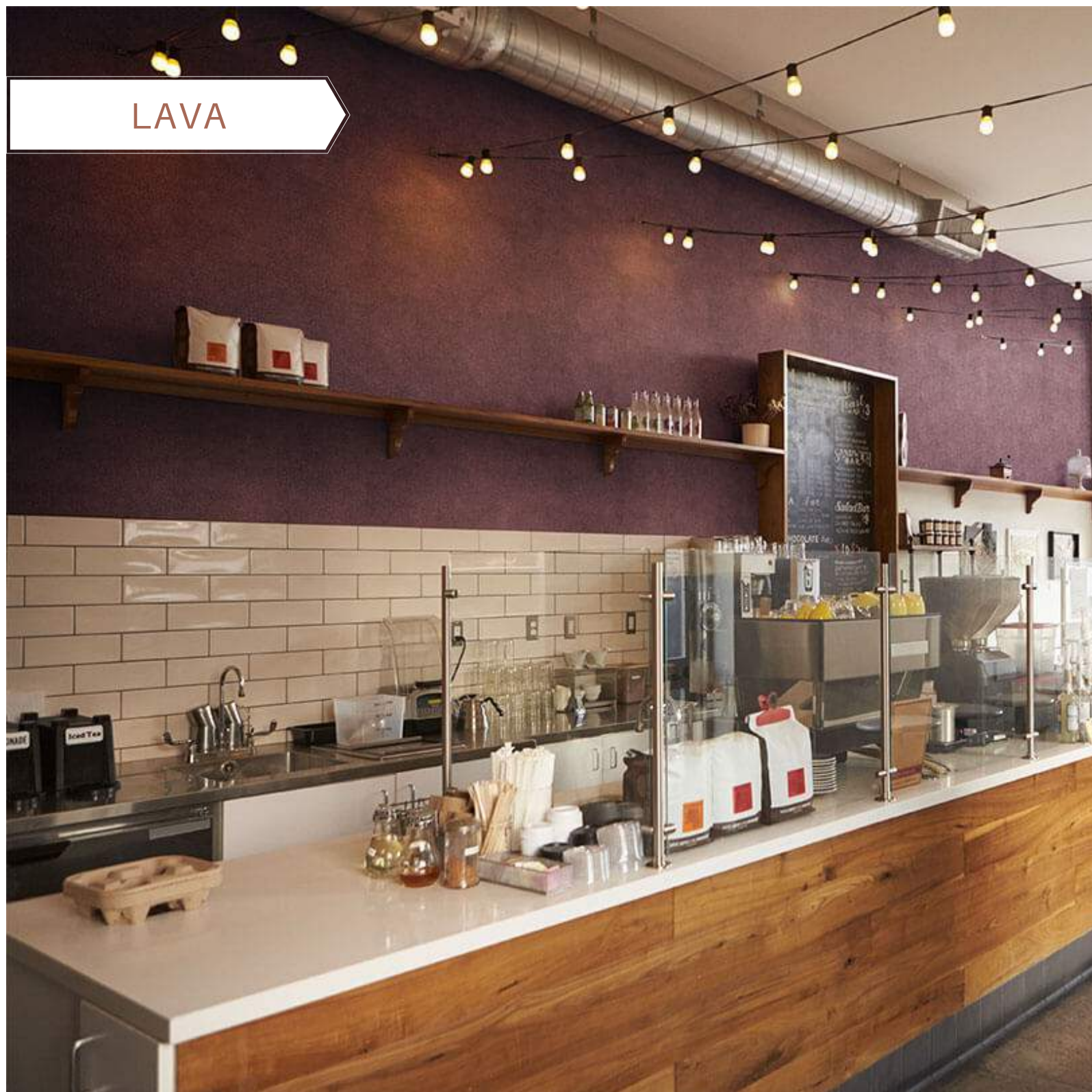
WOOD

EARTH



EARTH

LAVA



LAVA

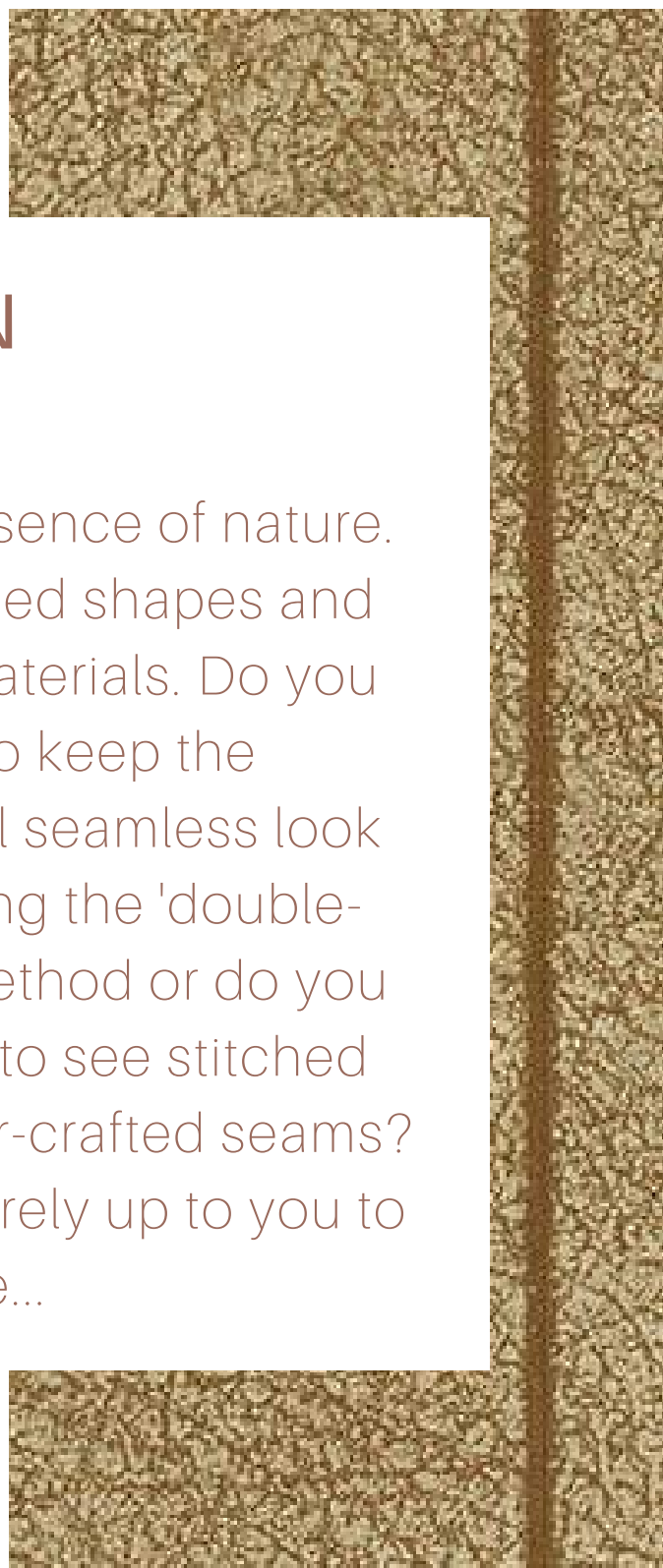
JOINT VARIABILITY

to find your balance



SKIN

-
the essence of nature.
Rounded shapes and
soft materials. Do you
want to keep the
natural seamless look
by using the 'double-
cut' method or do you
prefer to see stitched
leather-crafted seams?
It is purely up to you to
decide...



BENEFITS

let the wall impress and benefit from the nature of opposites



READY TO USE

The wallcoverings are supplied ready to apply, with no painting required.



IMPACT RESISTANT

They are strong enough to withstand scrapes, they are not damaged by chair backs and they are hard-wearing, to withstand scuffs and scrapes from luggage.



SCRUBBABLE

They are scrubbable and don't absorb water so also ideal for use in wet areas.



PERFECTLY COLOUR-FAST

The colours do not fade and the wallcoverings keep their looks over time.



BREATHABLE GLASS FIBRE

Durable and breathable material that is not affected by either water or the sun, providing the wallcoverings with unique features.



REPAINTABLE AND STRIPPABLE

Wallcoverings can be repainted and easily stripped without waste, and won't tear.



FIRE RESISTANT

Euroclass B-s1,d0 on substrate A1 or A2.



BREATHE-FRIENDLY

Class A+ stands for the lowest emissions of volatile substances, lowest risk of inhaling toxics.



MADE OF NON-TOXIC MATERIAL

Oeko-Tex 100 certification guarantees use of substances safe both for your health and the environment.

ADFORS NOVELIO[®] NATURE

Wallcoverings made of glass fibre are more hard-wearing than those made from many other materials, so you can enjoy the timeless elegance of Saint-Gobain Novelio wall coverings for much longer.

LET THE WALL IMPRESS

It is not only Nature we propose you through. You can also choose from various other highly decorative or tailor-made glass fibre wallcovering solutions in our Novelio range - from classical paintable styles to painted, pre-painted, acoustic and anti-microbial solutions to save your time and enhance your well-being. The choice is yours but all their qualities are promised by us - the SAINT-GOBAIN ADFORS team.



SAINT-GOBAIN ADFORS INDIA

Grindwell Norton Limited
Devanahalli Road
off Old Madras Road
Bengaluru - 560049,
Karnataka, India

Tel: +91-8088074949
novelio.india@saint-gobain.com



Facebook
Saint-Gobain Wallcoverings
facebook.com/saintgobainwallcoverings



Euroclass B - s1 - d0



1020
CZ00012661 / ATU45090501
EN 15102:2007+A1:2011

Name	Colour	Reference	Weight	Length	Width	Repeat
CONCRETE	HELSINKI	T8051 N	205 g/m ²	10 m	100 cm	—
	CASABLANCA	T8052 N				
	RIO	T8053 N				
	CHICAGO	T8054 N				
	NEW YORK	T8055 N				
	DUBAI	T8056 N				
	BERLIN	T8057 N				
SKIN	STONE	T8061 N				
	LICHEN	T8062 N				
	SAND	T8063 N				
	HONEY	T8064 N				
	WOOD	T8065 N				
	EARTH	T8066 N				
	LAVA	T8067 N				

The background is a grayscale aerial photograph of a landscape, likely agricultural, showing a grid-like pattern of fields. Two irregular regions are highlighted in a bright orange color: one in the upper right corner and another in the lower left corner. The text 'www.novelionature.com' is centered in the middle of the image in an orange font.

www.novelionature.com